

MODULAR RELIEF VALVE-50 SERIES



Technical Specification

Specification	02	03
Working pressure (Bar)	315	
Max. Flow (L/min)	60	100
Working fluid	Mineral hydraulic oil; phosphate-ester hydraulic oil	
Fluid temp. (°C)	-20~70	
Viscosity (mm ² /s)	10~800	
Working voltage (Bar)	50, 100, 200, 315	
Cleanliness	NAS 1638. Class 9, recommended filtration precision Min β ≥75.	

Ordering Code

W M R - * * - * - * / * 50 *

Modular relief valve

Size
02 : DN6
03 : DN10

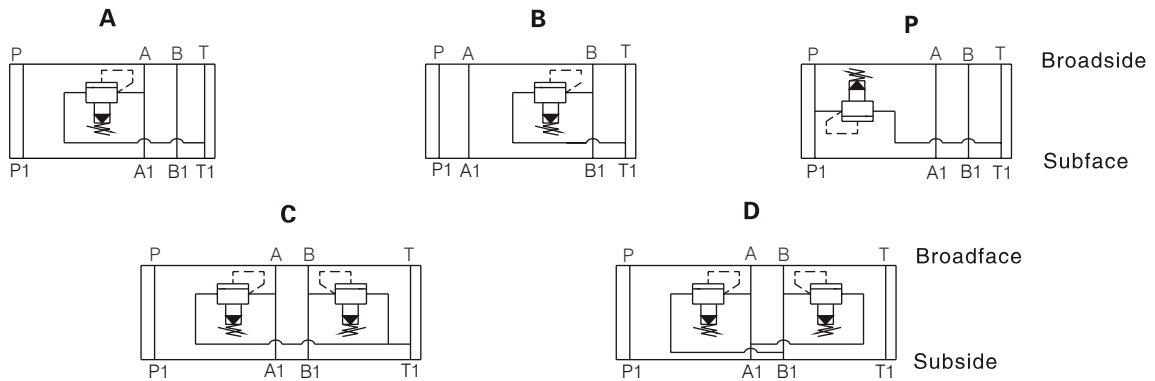
Relief method
P P→T
A A→T
B B→T
C A→T,B→T
D A→B,B→A

Remark
Serial number
Seal material
Omit : NBR
V : FPM

1 handle
2 with hexagon and protective cap

Pressur range
50 upto 50 bar
100 upto 100 bar
200 upto 200 bar
315 upto 315 bar

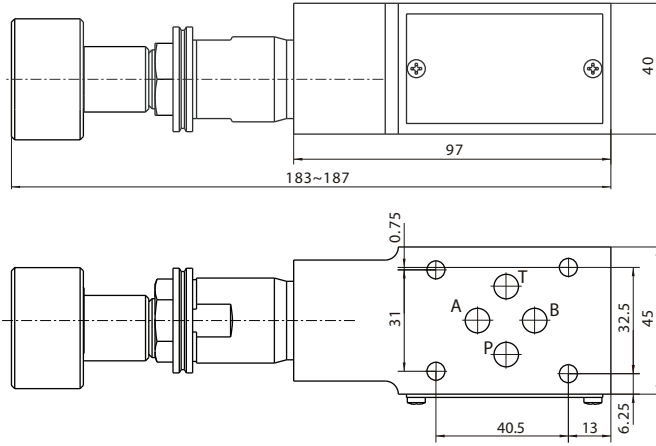
Hydraulic symbol



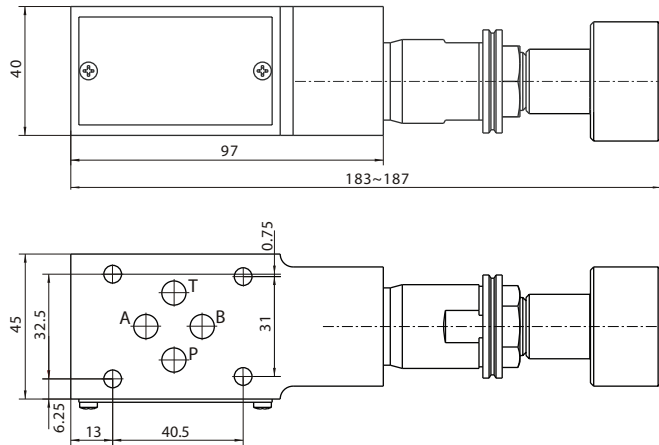
MODULAR RELIEF VALVE-50 SERIES

External dimensions

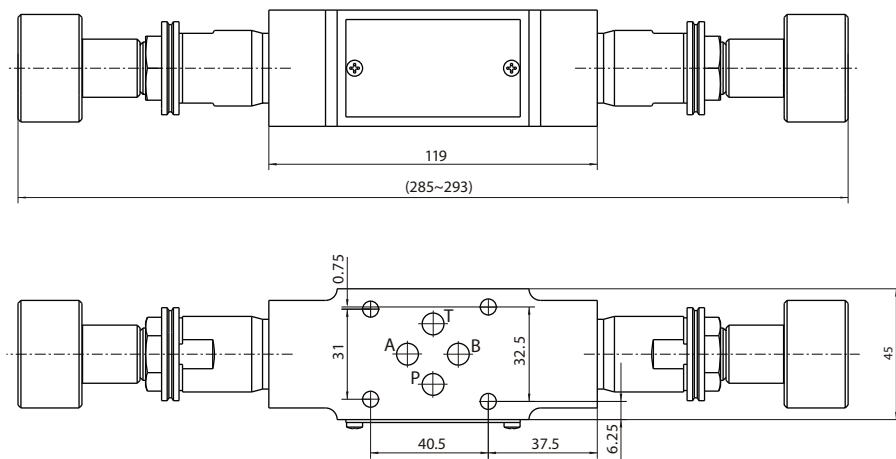
WMR-02 A



WMR-02 B, P



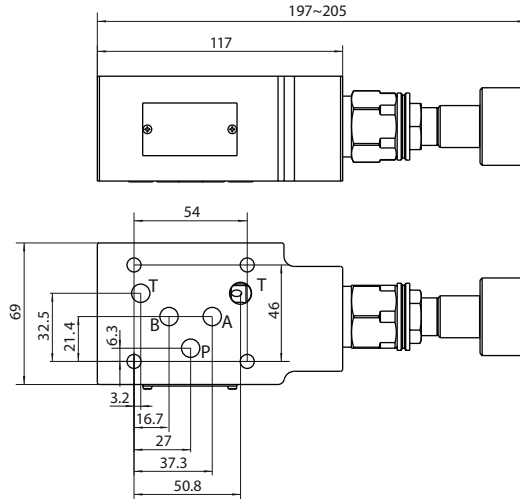
WMR-02 C, D



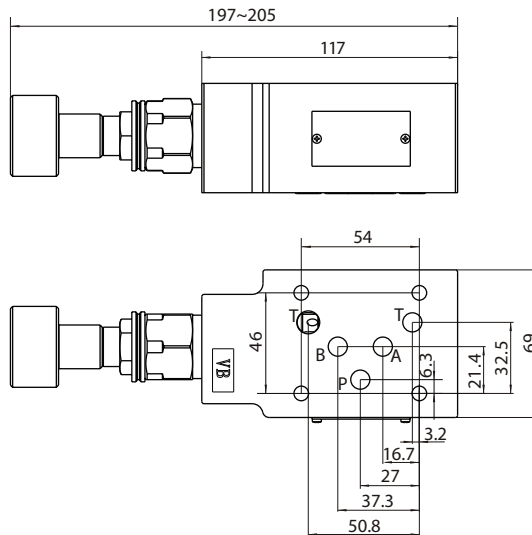
MODULAR RELIEF VALVE-50 SERIES

External dimednsions

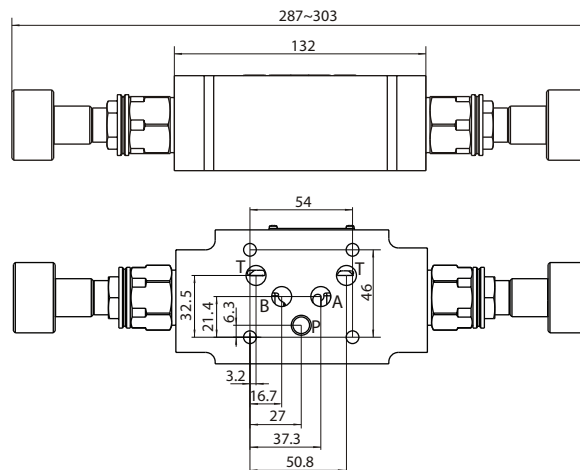
WMR-03 A, P



WMR-03 B



WMR-03 C, D



Note: The surface, connecting with the valve, should be Ra0.8 roughness, and 0.01/100mm flatness.